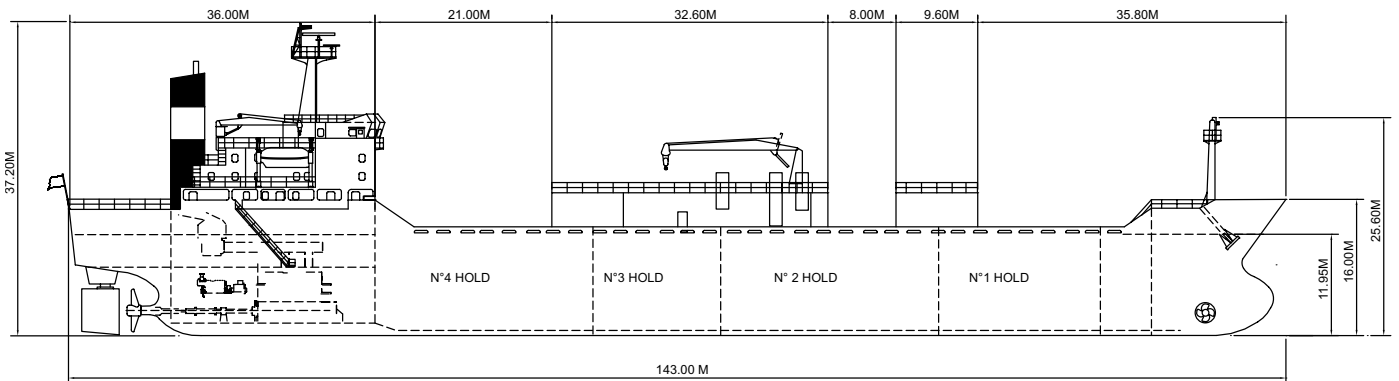
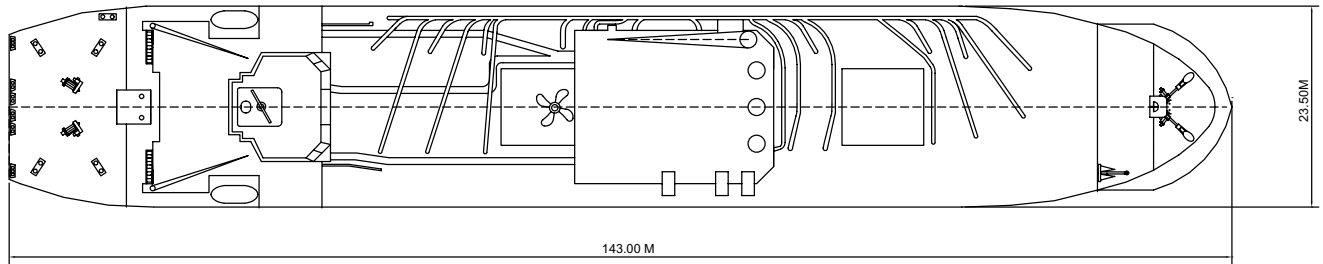
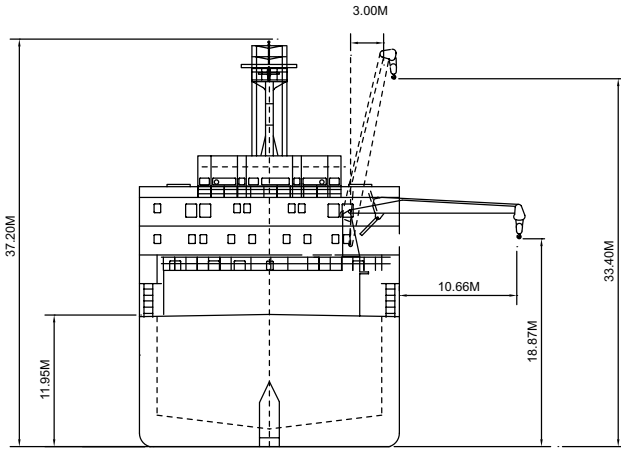




M/V Goliath underway.

Built	1993
Classification	LLOYDS +100A1, +LMC, UMS, CCS, IWS, LNC (AA) strengthened
Length Overall	143.0 metres
Breadth Moulded	23.5 metres
Depth Moulded	11,946 metres
Total Hold Capacity (including hatches)	13, 729 cubic metres
Deadweight	15,599 tonnes
Draft (summer)	8,335 metres
Gross Tonnage	11,754 tonnes
Net Tonnage	3, 526 tonnes
Bow Thruster	1200 kW
Discharge Rate	1,200 tonnes/hr

M/V GOLIATH



Air Drafts												
(metres)												
Draft Condition	Stem	Foremast	De-Duster Rm	Compressor Rm	De-Duster Rm	Cargo 10t Crane	Main Mast		Funnel	Stern	Other Obstruction*	Maximum
			Forward	Midship	Aft		Deployed	Lowered				
Keel	16.00	25.60	17.60	17.60	17.60	22.00	37.20	N/A	32.80	16.20	N/A	37.20
Light Ship	15.98	25.68	16.43	15.26	14.10	19.66	32.54	N/A	28.14	11.54	N/A	28.14
Normal Ballast 50% Bunker	10.80	20.40	12.30	11.65	11.30	16.05	30.50	N/A	26.10	9.50	N/A	30.50
Fully Loaded S-Draft 8.335 mtr SW	7.70	17.30	9.30	9.30	9.30	13.70	28.90	N/A	24.50	7.90	N/A	28.90

Hatch and Hold Specifications									
Hold Number	1	2	3	4					TOTAL
Hold Volumes (cubic metres)									
Cubic (grain)	2,631.0	4,234.0	2,636.0	4,228.0					13,729.0
Cubic in Hatchcoaming	N/A	N/A	N/A	N/A					
Hold Openings (metres)									
Number of Openings	1	1	1	1					
Opening Length	1.60	1.60	1.60	1.60					
Opening Width (Normal)	0.60	0.60	0.60	0.60					
Coaming Height above Keel	12.00	12.00	12.00	12.00					

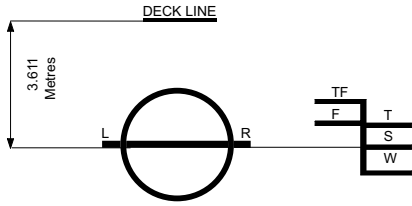
Flat plate bolted access hatches

Cargo Handling Equipment
• Self enclosed positive feed pneumatic cargo system
• 4 Ibau pneumatic positive feed cement pumps
• 8 Ibau Variable-aperture Flow control gates
• 8 Aervener VM Screw Compressors
• 8 Ibau Rotary Piston blowers
• Ibau two-way diverter valves
• Support machinery:
• Main Cargo Crane for hose support
• 1 x Haggglunds 10t SWL cargo crane Max out reach 10.66t, at 18.9m above keel
• Cargo crane to assist connection/disconnection
• 1 x Haggglunds 3t SWL cargo crane

Consumption (tonnes per day)				
	Speed		Main Engine HFO	Generators
	Loaded	Ballast	HFO	HFO
Sea	14.5	14.0	25.0	2.6
Port / Anchorage			0	2.6
Loading / Discharge			0	14.5

For more information on this ship please visit www.cslint.com

M/V GOLIATH



ASSIGNED DRAFTS			
Season	Draft (metre)	Displ. (tonnes)	DWT (tonnes)
TF	8.67	21,339	16,023
F	8.49	21,346	16,030
T	8.50	20,858	15,542
S	8.34	20,915	15,599
W	8.14	20,367	15,051

Light Ship
5,316 tonnes

DEADWEIGHT SCALE									
DRAFT				DISPLACEMENT	TPC	DEADWEIGHT	DRAFT		
Sea Water		Fresh Water					Sea Water		
(metre)	(feet)	(metre)	(feet)	(tonnes)	(tonnes)	(tonnes)	(feet)	(metre)	
	28		28	22,000			28		
				21,000		16,000			
8	26	8	26	20,000	28	15,000	26	8	
				19,000		14,000			
	24		24	18,000		13,000			
7	22	7	22	17,000		12,000		7	
				16,000		11,000			
6	20	6	20	15,000	27	10,000	20	6	
				14,000		9,000			
	18		18	13,000		8,000		18	
5	16	5	16	12,000	26	7,000	16	5	
				11,000		6,000			
	14	4	14	10,000		5,000		14	
4	12	4	12	9,000		4,000		12	
				8,000		3,000			
3	10	3	10	7,000	25	2,000	10	3	
				6,000		1,000			
	8		8	5,000		0		8	
2	6	2	6	5,000	24		6	2	



For more information on this ship please visit www.cslint.com