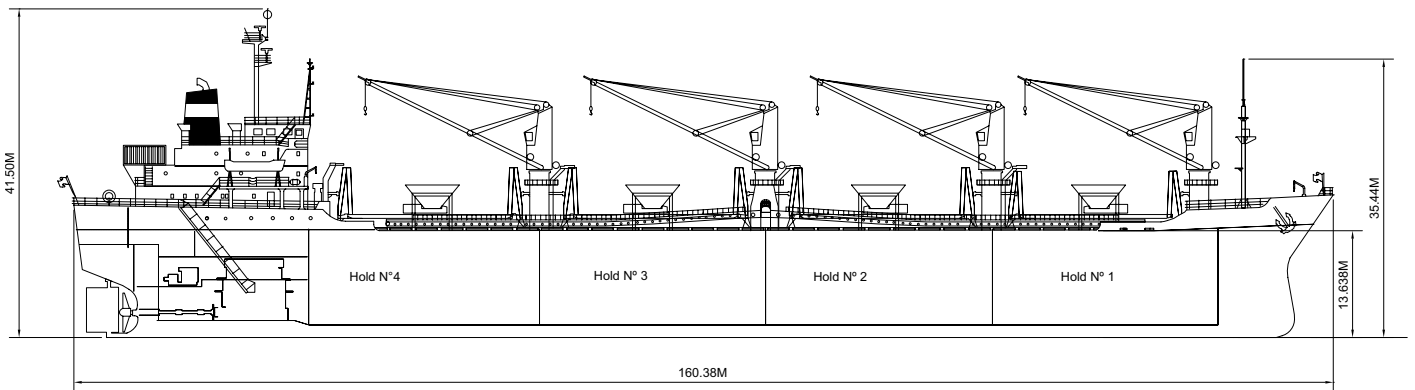
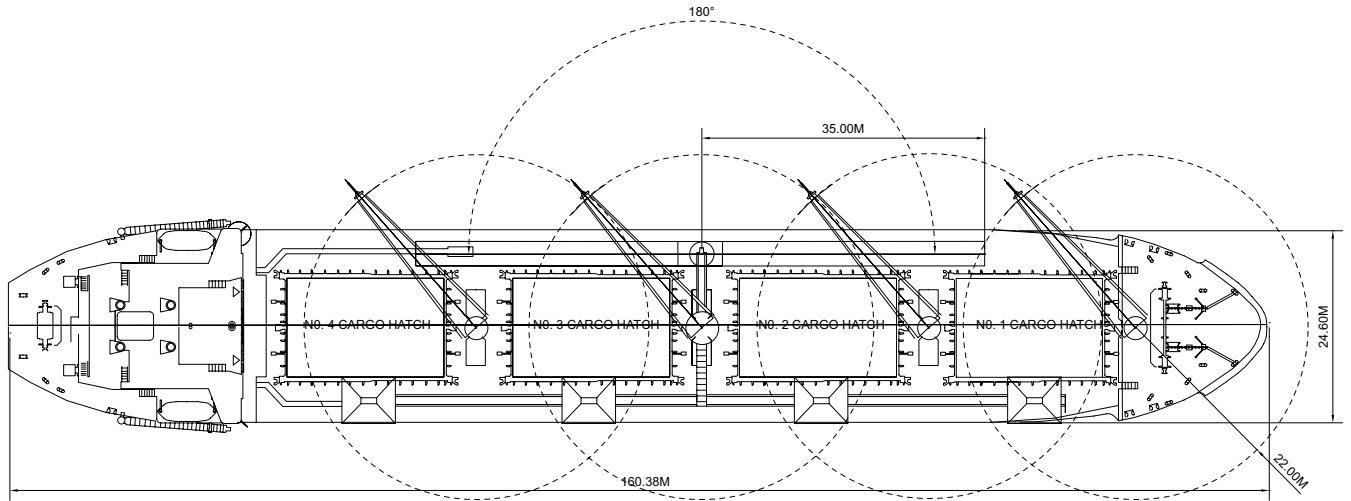
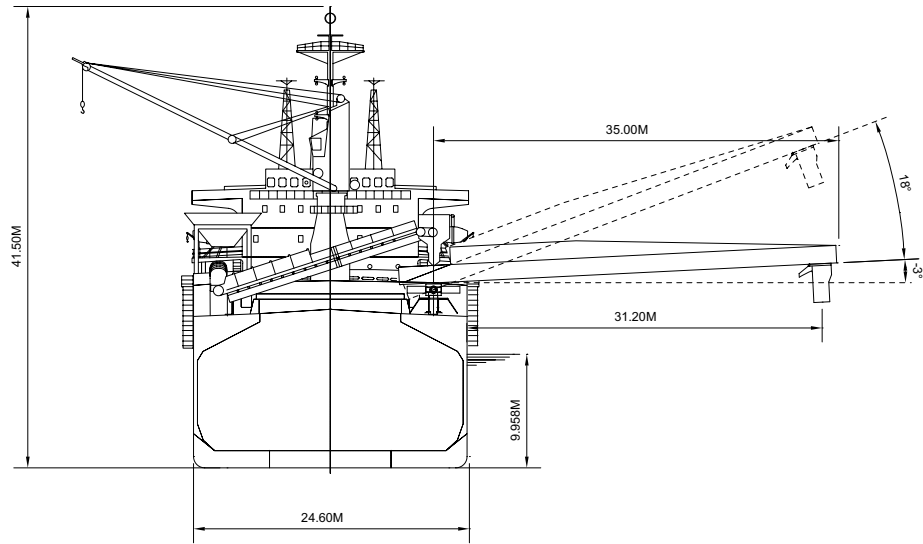




*Departing Newcastle Australia*

Built	.....	1981
Classification	.....	RINA
Length Overall	.....	160.38 metres
Breadth Moulded	.....	24.60 metres
Depth Moulded	.....	13.60 metres
Total Hold Capacity (including hatches)	.....	29, 840.70 cubic metres
Deadweight	.....	23,794 tonnes
Draft	.....	9.958 metres
Gross Tonnage	.....	14,454 tonnes
Net Tonnage	.....	8,584 tonnes
Bow Thruster	.....	Not Fitted
Length of Boom	.....	35.00 metres
Discharge Rate (maximum)	.....	1,200 tonnes/hr



<b>Air Drafts</b> (metres)												
Draft Condition	Stem	Foremast	Forward	Hatches Midship*	Aft	Cargo Gear	Main Mast Deployed	Lowered	Funnel	Stern	Other Obstruction	Maximum
Keel	18.00	35.44	16.00	16.00	16.00	30.70	41.50	N/A	33.20	16.80	-	41.50
Light Ship	17.40	34.75	14.91	13.58	12.01	29.39	37.81	N/A	29.00	12.81	-	37.81
Normal Ballast 50% Bunker	12.00	31.90	11.63	10.86	10.45	26.06	34.86	N/A	27.00	10.80	-	35.80
Fully Loaded S-Draft 9.958 mtr SW	8.04	25.44	6.04	6.04	6.04	20.74	31.54	N/A	23.24	6.84	-	31.54

<b>Hatch and Hold Specifications</b>									
Hold Number	1	2	3	4					TOTAL
<b>Hold Volumes (cubic metres)</b>									
Cubic (grain)	6727.72	8199.62	8203.59	8102.44					31233.37
Cubic in Hatchcoaming	400.38	435.2	435.2	435.2					1705.98
<b>Hold Openings (metres)</b>									
Number of Openings	4	4	4	4					16
Opening Length	4.60	5.00	5.00	5.00					
Opening Width	12.80	12.80	12.80	12.80					
Coaming Height above Keel	15.40	15.40	15.40	15.40					
<b>Hatch Information (metres)</b>									
Description	Mc Gregor, Folding type hatch cover, naturally ventilated and CO2 fitted; Australian ladders fitted in each cargo hold.								
Operation	Hydraulic cylinder system								
Hatch Length	18.40	20.00	20.00	20.00					
Hatch Width	12.80	12.80	12.80	12.80					
Hatch Top Height above Keel	16.00	16.00	16.00	16.00					

<b>Cargo Handling Equipment</b>
<ul style="list-style-type: none"> <li>• 4 Hoppers, Capacity 65 cu.m, Dimension 6800 x 5800 mm</li> </ul>
<ul style="list-style-type: none"> <li>• 4 deck cranes, 25 t, max.outreach 22.0 m (jib angle 25 deg.) min.outreach 4.5 m (jib angle 79 deg.)</li> </ul>
<ul style="list-style-type: none"> <li>• 4 Grabs, capacity 14.0 cu.m x 0.9 t/cu.m, Weight: 9760 kg</li> </ul>
<ul style="list-style-type: none"> <li>• Self Unloader system: Boom conveyor: <ul style="list-style-type: none"> <li>- Horizontal angle of operation - 180 deg</li> <li>- Vertical angle of operation: from -3 deg. till +18 deg.</li> </ul> </li> </ul>
<ul style="list-style-type: none"> <li>• Max.distance from ship's side to center of spout - 31.2 m</li> </ul>

<b>Consumption (tonnes per day)</b>					
	Speed		Main Engine HFO		Generators
	Loaded	Ballast	Loaded	Ballast	MDO
Sea	13.0	12.5	24.0	23.0	1.5
Port / Anchorage					1.5
Loading / Discharge					4.0

